

# INDICATIONS FROM THE FENG SHUI TO OCCUPY THE INICIARTE SPACE CÓRDOBA

by Beatriz Fernández

Feng shui is a Chinese philosophical system of harmonizing everyone with the surrounding environment. It is closely linked to Taoism. The term Feng shui literally translates as “wind-water” in English. This is a cultural shorthand taken from the passage of the now-lost Classic of Burial recorded in Guo Pu’s commentary: Feng shui is one of the Five Arts of Chinese Metaphysics, classified as physiognomy (observation of appearances through formulas and calculations). The Feng shui practice discusses architecture in metaphoric terms of “invisible forces” that bind the universe, earth, and humanity together, known as qi.

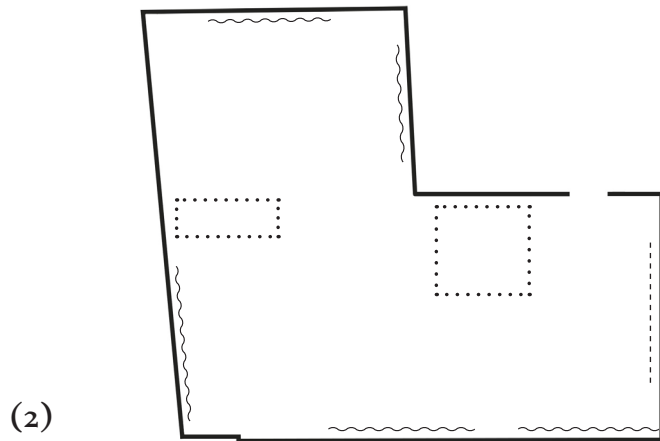
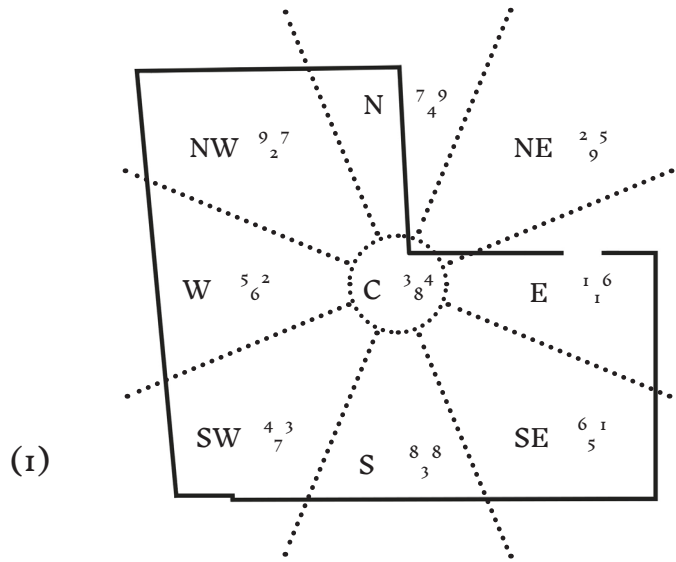
In the West, Feng shui became a technique commonly used to study buildings, providing design guidelines in construction and in garden design. The technique uses variables such as the location, the morphology of the construction and the surrounding environment; to propose a correct distribution of the functional spaces. These guidelines are intended to improve harmonic vibrations, and thus, the habitability of spaces.

The present study of the IniciarTE Space Córdoba has been realized by Beatriz Fernández, president of the Association of Technicians and Professionals of Feng shui ([www.atpf.es](http://www.atpf.es)). ATPF brings together architectural, design and interior design professionals who apply the Feng shui technique in fields related to construction, building renovation and decoration. ATPF is an association where both professionals and individuals can go to contact experts of this millennial technique.

The study of the space begins with the valuation of the building of which it is part: the environment that surrounds it, the accesses and adjoining buildings, the year of its construction, etc. With these data, the geomantic chart of the building is realized, and then, the geomantic chart of the exhibition space that we attach to the right – plan 1-.

From his analysis, the following are the general considerations and recommendations to intervene in the Iniciarte Space Córdoba:

- Because it is a single space, not being able to make changes in the structural morphology of the building, the most important thing to consider will be the movement that is generated in the exhibition space and the range of color used. To improve the circulation, two locking zones are proposed. In these zones, decorative elements will be placed that impede the passage and oblige the desired circulation – plan 2 –.
- To improve the quality of the space it is advisable to introduce elements with curved shapes. The first locking zone will be placed next to the entrance (when entering at the right). Materials such as soil or metal may be used in this area. It is not the material in question that interests us, but the vibration they bring. The other block zone will be located in the West side of the room. It is advisable to place metal elements with curved shapes and / or plants. It will try to disable the eastern zone of the space, not placing rest areas.
- The best walls to locate the images are provided in the adjacent plan – plan 2-. In addition, it is advisable to place the photographs of major importance and impact on the South wall of the space. In the East wall, it is advisable to place the text of the exhibition or an image without great visual presence.
- The range of color that must invade the space is based on the elements water and metal, this means that the following colors can be used: white, gray, black and / or blue. They will also try to include elements with wavy and circular shapes in the decoration.



**(1)** Geomantic chart of the exhibition space. In it the type of energy is marked according to the orientations and the magnetic front. The three figures indicated next to the cardinal points mark the type of energy of each area. The lower figure corresponds to the energy 'Time', and the two higher ones to the energies 'Mountain' and 'Water'.

**(2)** In points: locking zones. In wavy line: strips of walls recommended for the placement of photographs. Discontinuous line: location of explanatory text or non-dominant image.

